

Case Study

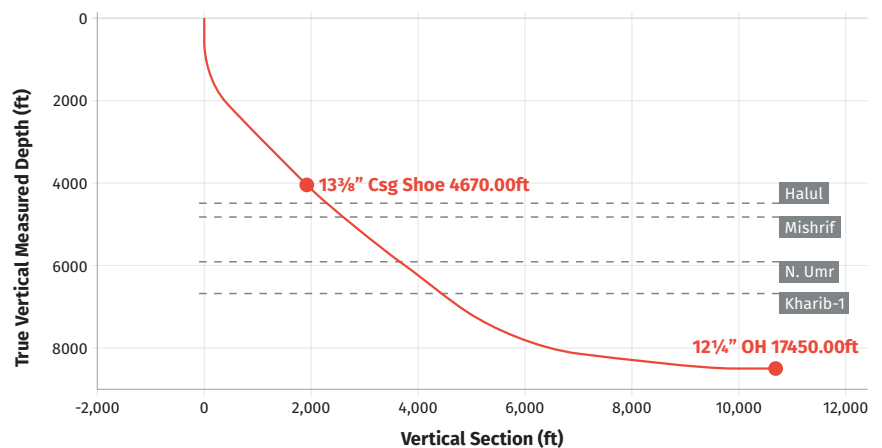
9⁵/₈" TurboCaser Reams over 700 ft

THE BACKGROUND

- An ERD well located offshore in Abu Dhabi with 10,000 ft 12¹/₄" hole section
- Setting casing deeper was required to eliminate the need for an intermediate liner
- Challenging environment with soft, unstable formations and high inclination
- Well sidetracked on four occasions, one lost BHA and many stuck pipe-events

THE RESULT

- Drilling reached target depth on fourth sidetrack with great difficulty
- 10,000 ft of 9⁵/₈" casing was run into this extremely challenging hole
- 9⁵/₈" TurboCaser deployed to enhance chances of successfully landing at target depth first time.
- The tool operated through many tight spots for a total of 700 ft casing and landed at target depth first time in 33 hours, a 98% reduction in time, saving the operator \$13,700,000
- Successful cementing and drill out with a tri-cone bit was achieved in 1.5 hrs



IN NUMBERS

■ Conventional Technology
■ TurboCaser

70 Days NPT
1.5 Days TC

1,647
HOURS
SAVED

£14M
£0.3M

£13.7M
SAVED

4,340 MT
2,294 MT

2,046
MT CO₂
EMISSIONS
SAVED